

MNIE + ZONE INONDABLE
DANS LA ZAC

MILIEU NATUREL D'INTERET
ENVIRONNEMENTAL

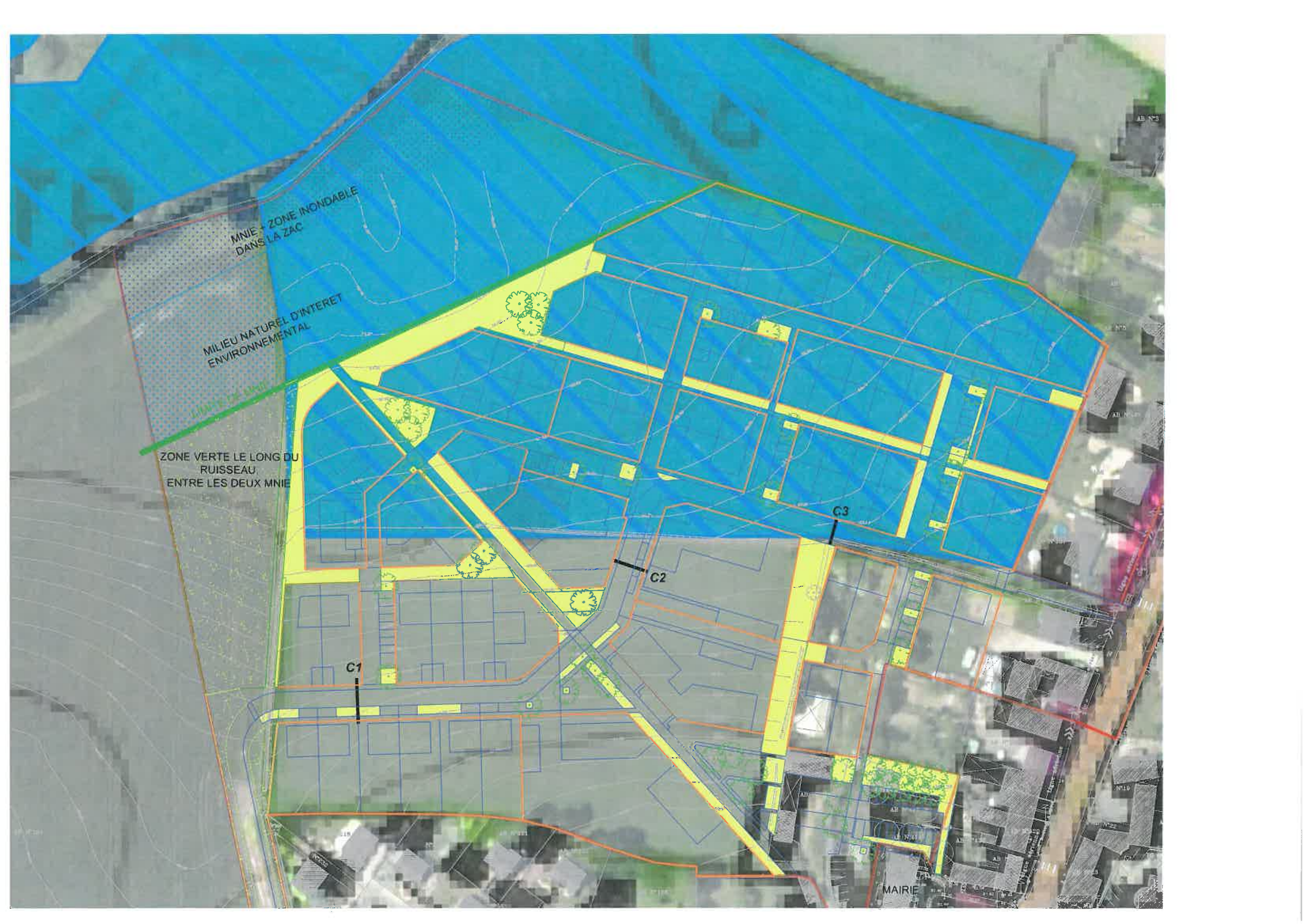
ZONE VERTE LE LONG DU
RUISSEAU
ENTRE LES DEUX MNIE

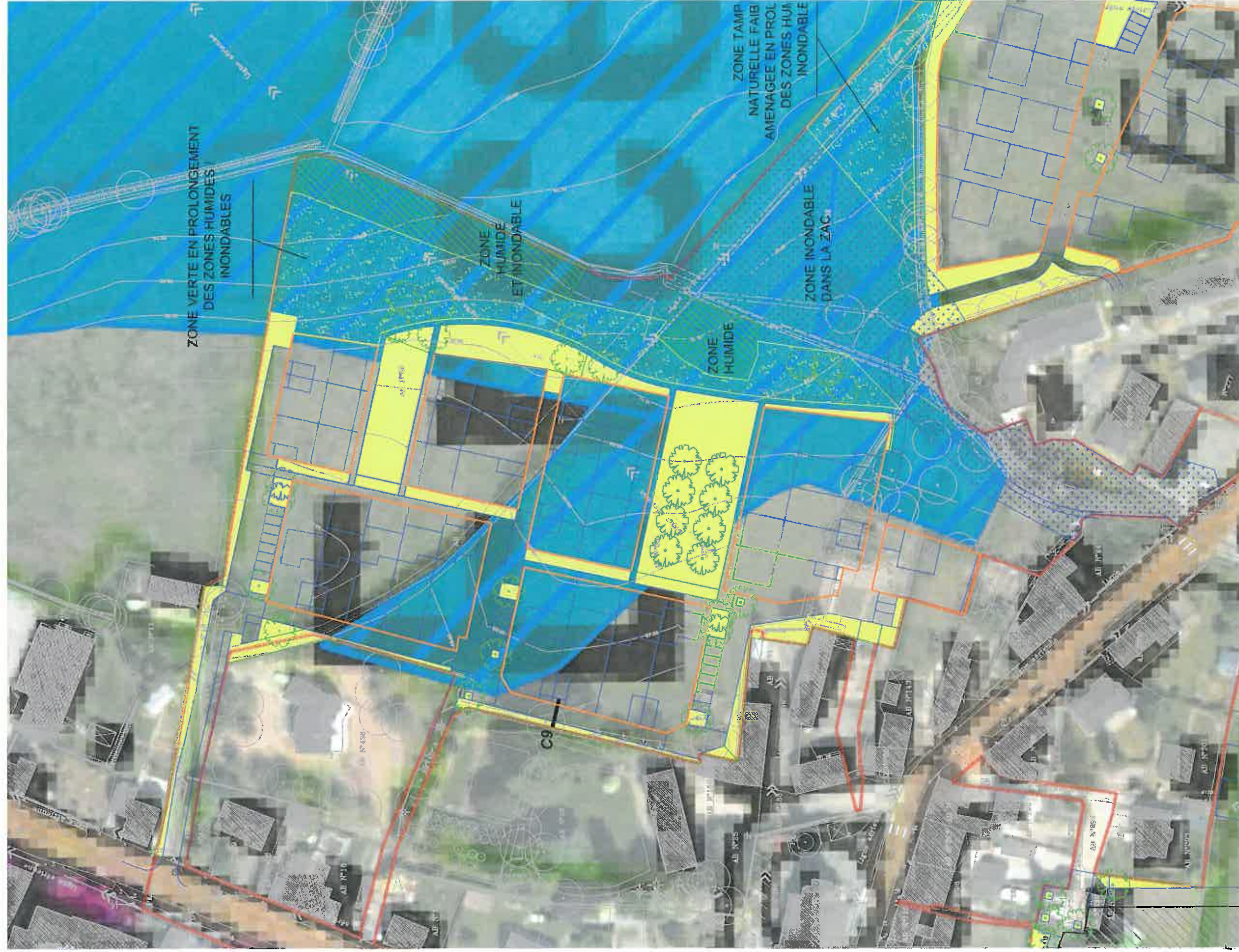
C1

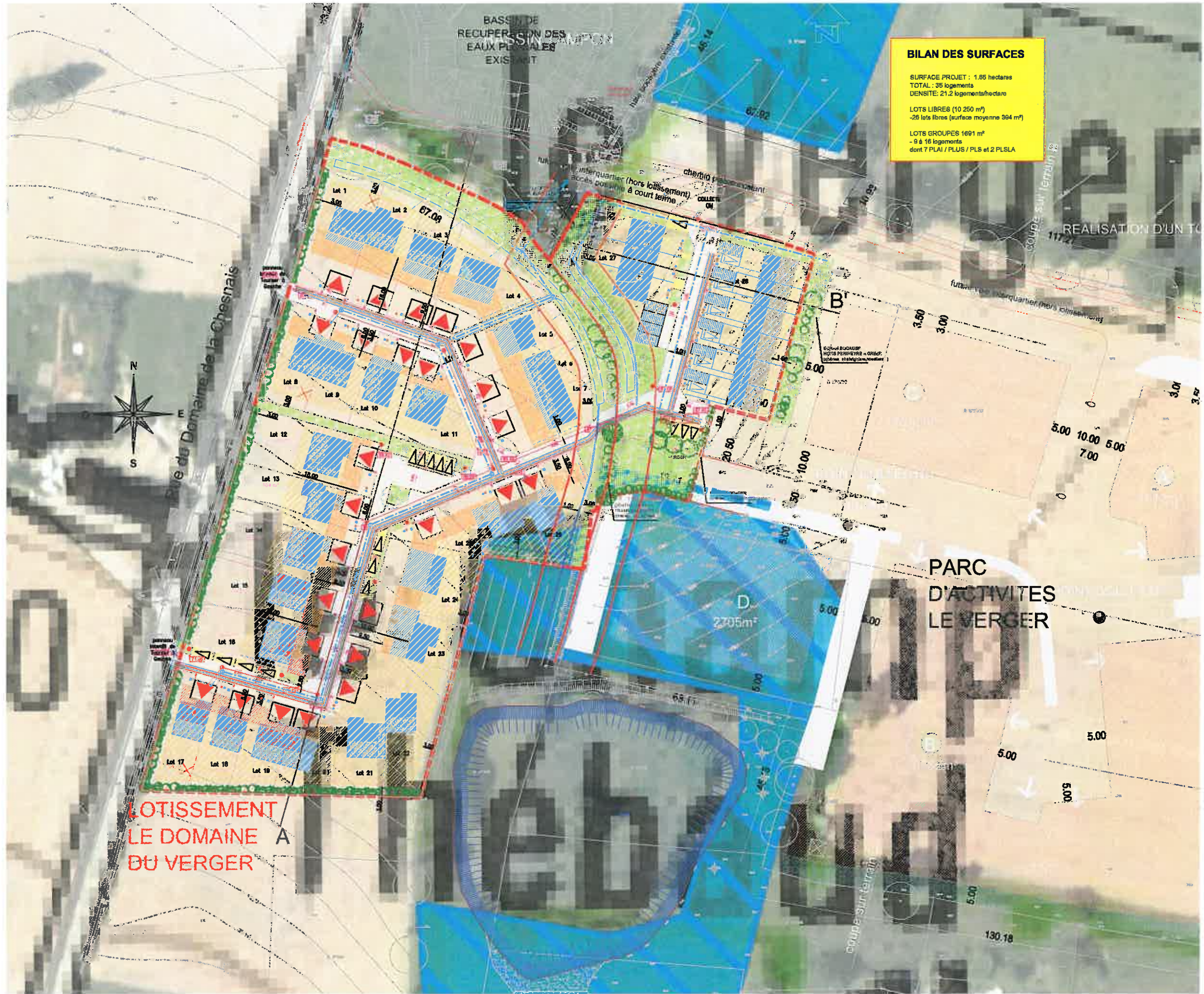
C2

C3

MAIRIE







BILAN DES SURFACES

SURFACE PROJET : 1,85 hectares
 TOTAL : 35 logements
 DENSITE : 21,2 logements/hectare

LOTS LIBRES (10 250 m²)
 - 26 lots libres (surface moyenne 394 m²)

LOTS GROUPES 1691 m²
 - 9 à 16 logements
 dont 7 PLAI / PLUS / PLS et 2 PLSLA

**LOTISSEMENT
 LE DOMAINE
 DU VERGER**

**PARC
 D'ACTIVITES
 LE VERGER**

BASSIN DE
 RECUPERATION DES
 EAUX PLUVIALES
 EXISTANT



Rue du Domaine de la Chesnais

REALISATION D'UN T...

D
 2705m²

130,18

Lot 1

Lot 2

Lot 3

Lot 4

Lot 5

Lot 6

Lot 7

Lot 8

Lot 9

Lot 10

Lot 11

Lot 12

Lot 13

Lot 14

Lot 15

Lot 16

Lot 17

Lot 18

Lot 19

Lot 20

Lot 21

Lot 22

Lot 23

Lot 24

Lot 25

Lot 26

Lot 27

Lot 28

Lot 29

Lot 30

Lot 31

Lot 32

Lot 33

Lot 34

Lot 35

67,08

67,08

67,08

67,08

67,08

67,08

67,08

67,08

67,08

67,08

67,08

67,08

67,08

67,08

67,08

67,08

67,08

67,08

67,08

67,08

67,08

67,08

67,08

67,08

67,08

67,08

67,08

67,08

67,08

67,08

67,08

67,08

67,08

67,08

67,08

67,08

67,08

67,08

67,08

67,08

67,08

67,08

67,08

67,08

67,08

67,08